

# Evaluate and Assess your Operational Controls

API Assessment Approach



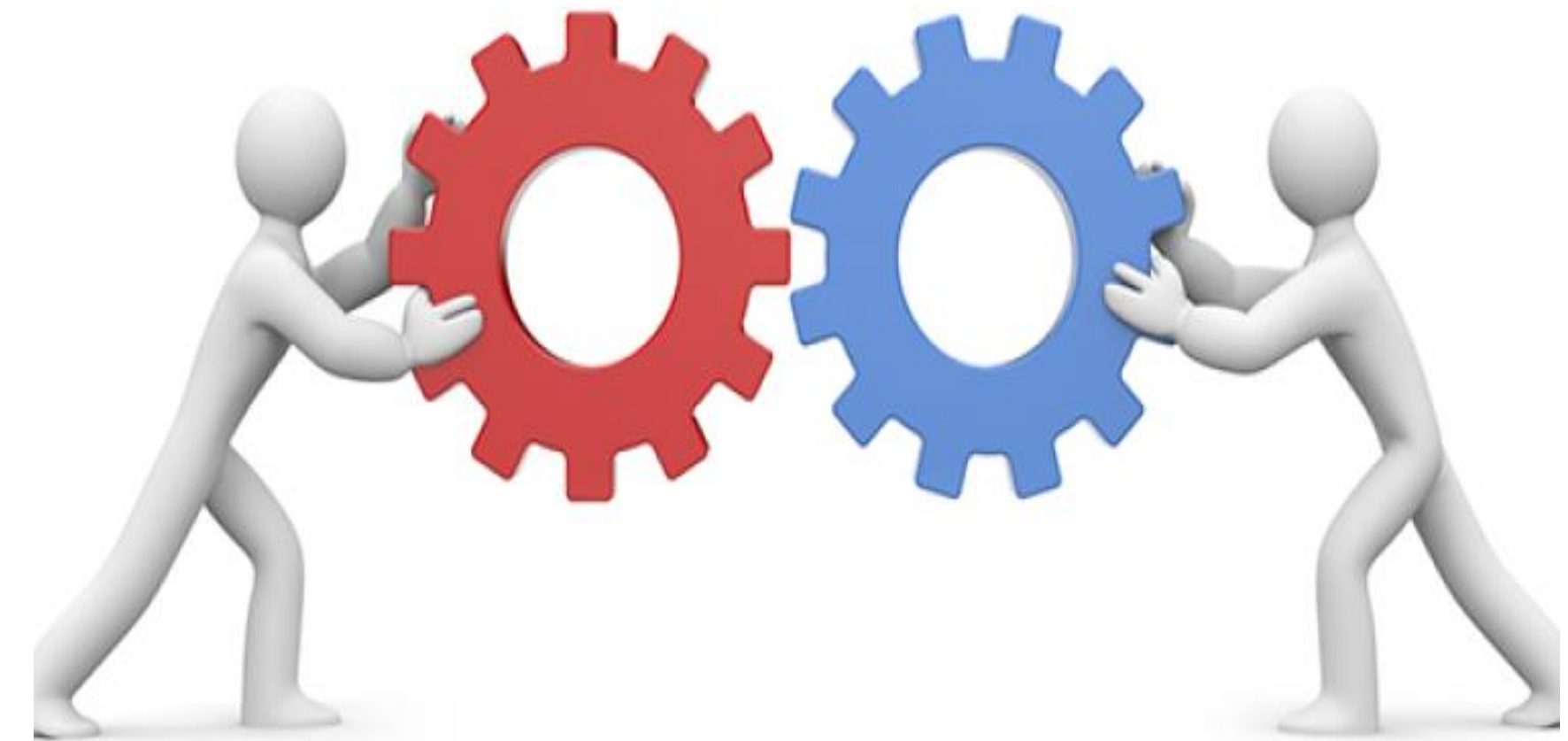
**Pipeline SMS**



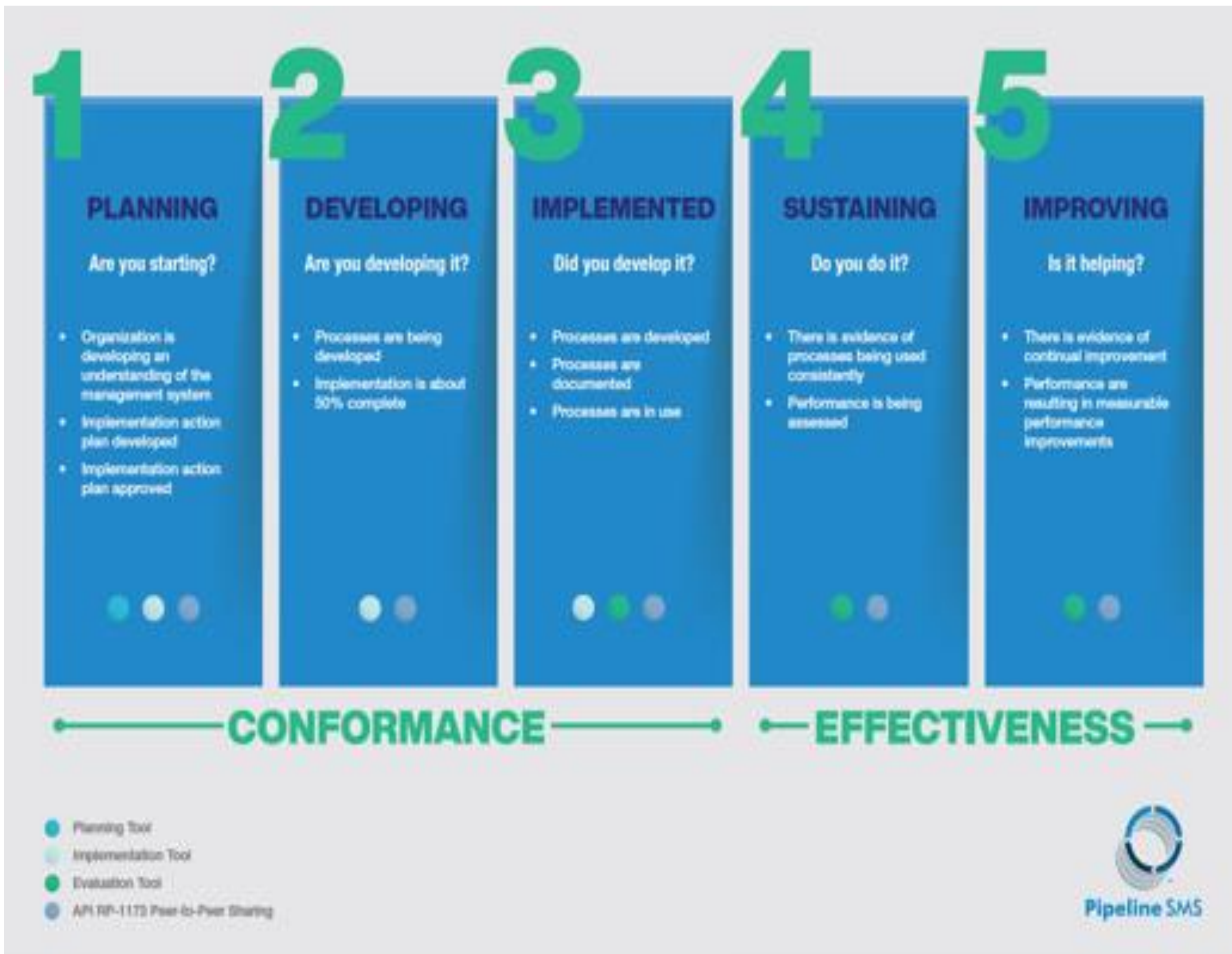


# Got these Operational Controls?

- |                                     |            |
|-------------------------------------|------------|
| • Safe Work Practices               | ✓ Got Them |
| • Operating Procedures              | ✓ Got Them |
| • Engineering/design Standards      | ✓ Got Them |
| • Quality Control Procedures        | ✓ Got Them |
| • Inspection Procedures             | ✓ Got Them |
| • Integrity Procedures              | ✓ Got Them |
| • Management of Change Procedure(s) | ➤ Probably |
| • Contractor Management Procedure   | ✓ Got One  |



# Pipeline SMS Maturity Model



The PSMS Maturity Model has 5 levels:

- Levels 1-3 indicate the degree to which the operator's PSMS conforms to the requirements of RP 1173;
  - ✓ *To achieve Level 3, a process should be fully developed and implemented within the organization, but it does not need to have been through a PDCA cycle;*
- Levels 4 and 5 indicate the degree to which it has been **effectively implemented** and is resulting in measurable performance improvement;

**Pipeline SMS is a Journey, NOT a Destination.**



American  
Petroleum  
Institute





# Assessment Planning



**Assessor Team** – assigned based on experience necessary to achieve the objectives of each assessment



**Assessment Scope** – based upon operator's covered assets and HQ; outlines discussions with management and element leads



**Assessment Duration** – based upon size and composition of assessment team; type and complexity of operations, organizational structure, and location of assets

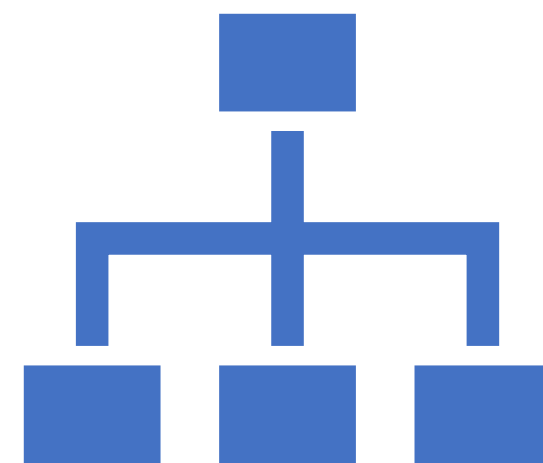


**Assessment Plan** – Developed by API GIS and operator prior to scheduled execution of assessment

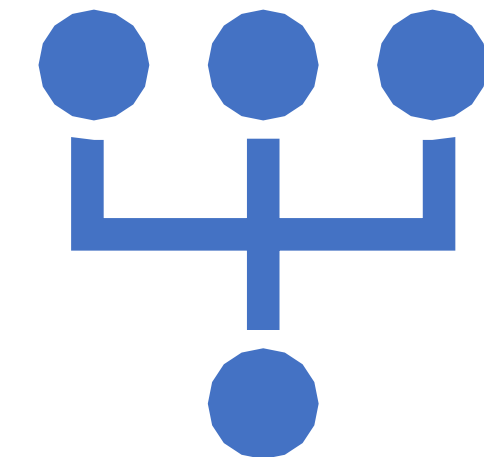
# Assessment Approach or Thought Process



Comprehensive - The degree to which this program, process, procedure, or organization addresses all relevant requirements.



Systematic - The degree to which this program, process, procedure, or organization incorporates a systematic method, appropriate to its risk and complexity, to address all relevant requirements.

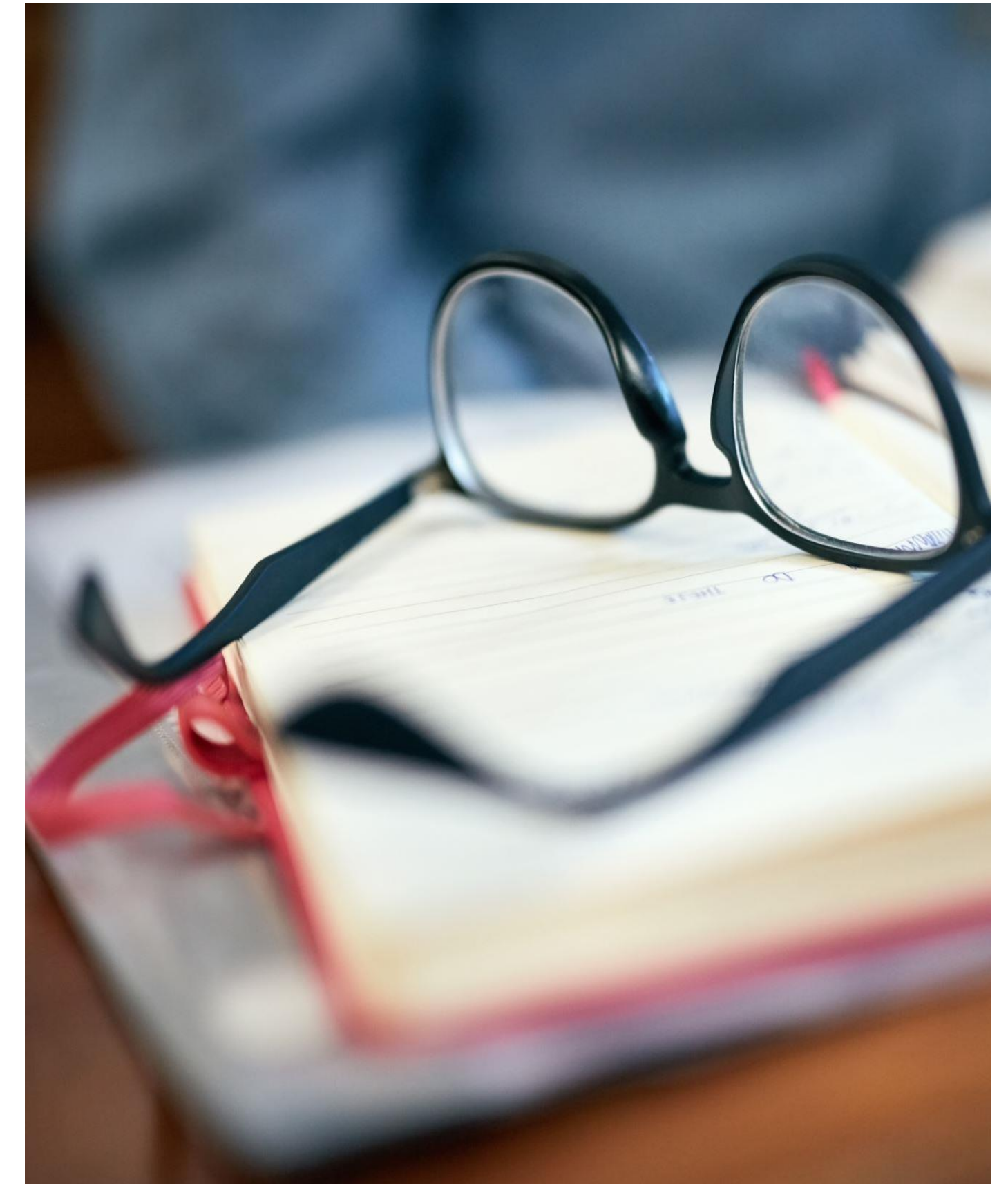


Integrated - The degree to which the relevant aspects of this program, process, procedure, or organization for this question are integrated into other relevant programs, processes, procedures, or organizations.



# Assessment Pre-read

- Confirm Procedures Contain the Requirements.
- Select some Roles for Interviews.
- Develop Questions for Clarification of Procedure Content.
- Time Frame – a couple of hours per Assessor



# Interviews



Document Owner

Operational Control User

Second Operational Control User

Third Operational Control User

Validator



# Assessment Evaluation

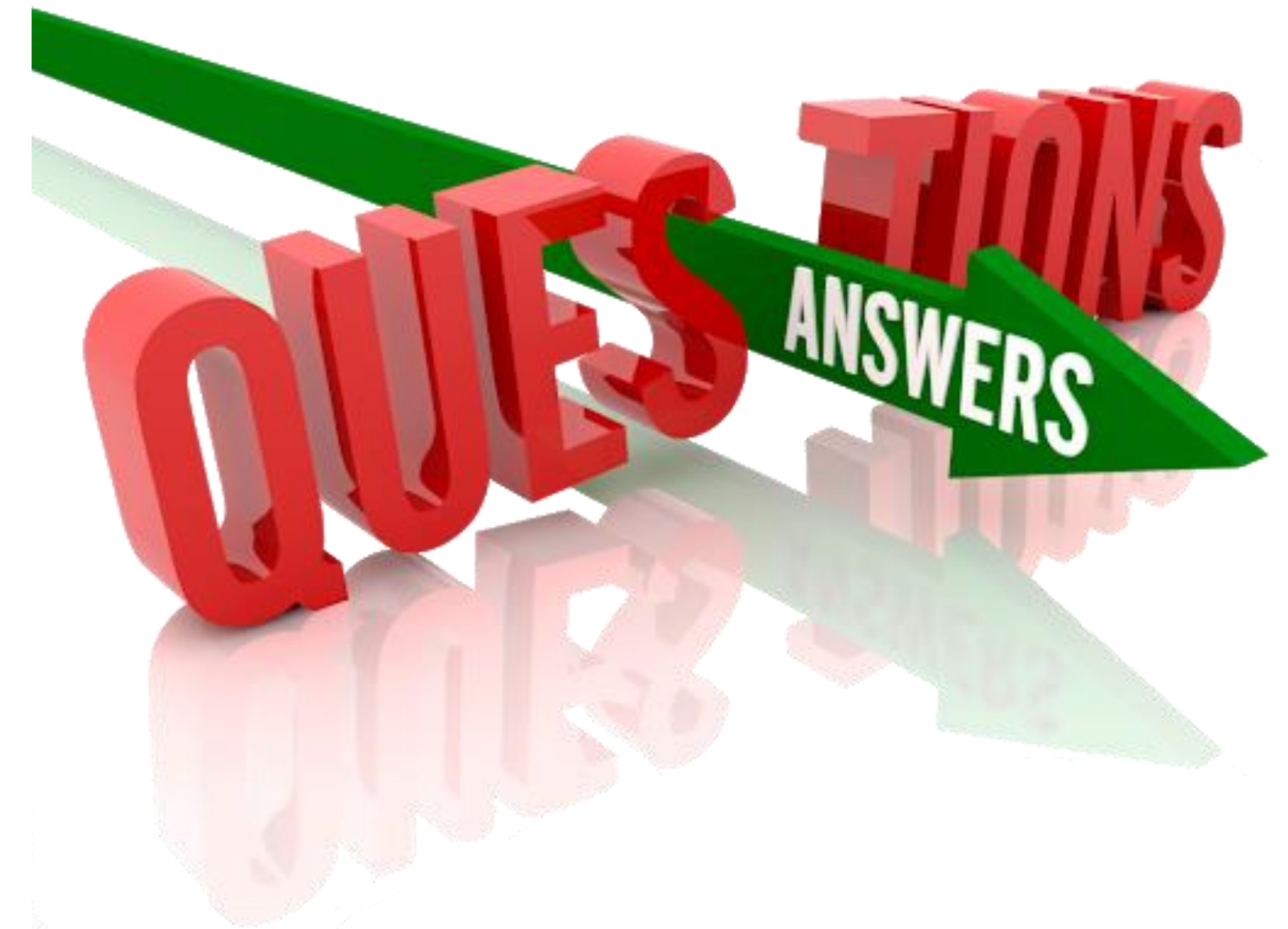
- Sampling of the More Complex Operational Controls
- Looking for Consistency in Usage (and ideally Understanding)
  - ✓ Know Why Consistency is Important
  - ✓ Know Why the Operational Control Exists
  - ✓ How They Came to Understand
- Look at a Sampling of the Results
  - ✓ Consistency
  - ✓ Discussion with Other Assessors on How Results are Used in Other Elements





# Summary

- The Operational Controls Exist
- The Operational Controls Are Comprehensive (meets the Requirements)
- Clear Enough that Users can Use Them and Different Persons Would Use Them Consistently
- If Applicable to Several Groups, They are Used Systematically
- Results of Use Provides Correct, Useful, Understandable Information
- Users of Results can Trust the Information







# THANK YOU!

Visit us at: [pipelinesms.org](https://pipelinesms.org)

Rick Lide  
RLide@rcp.com